

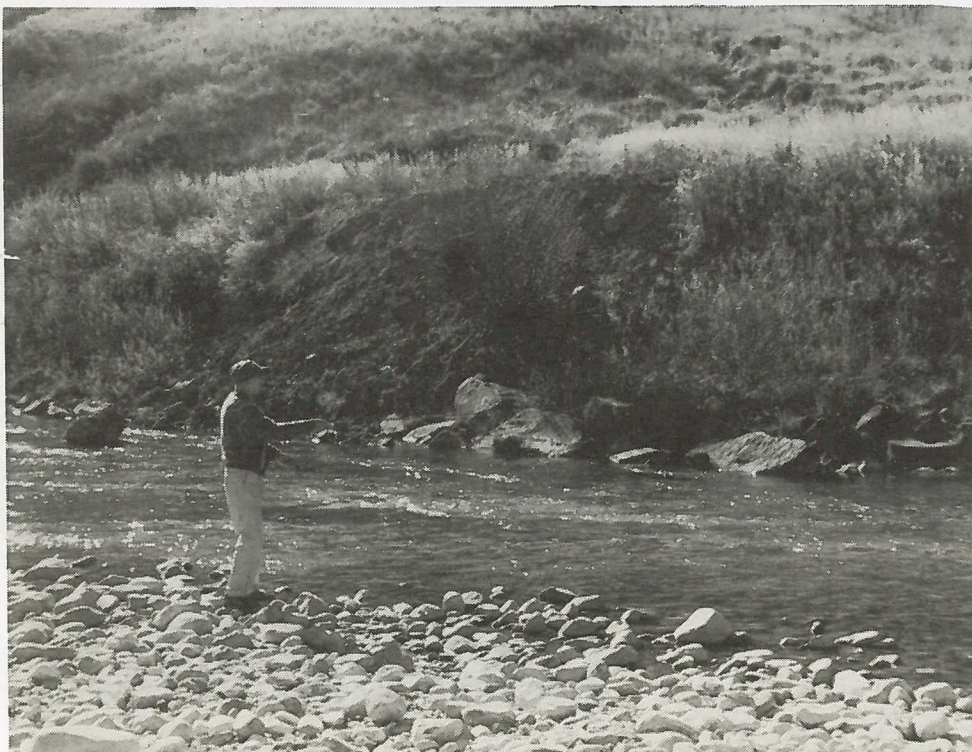
ROUFF WATERS

By Debbie Stout



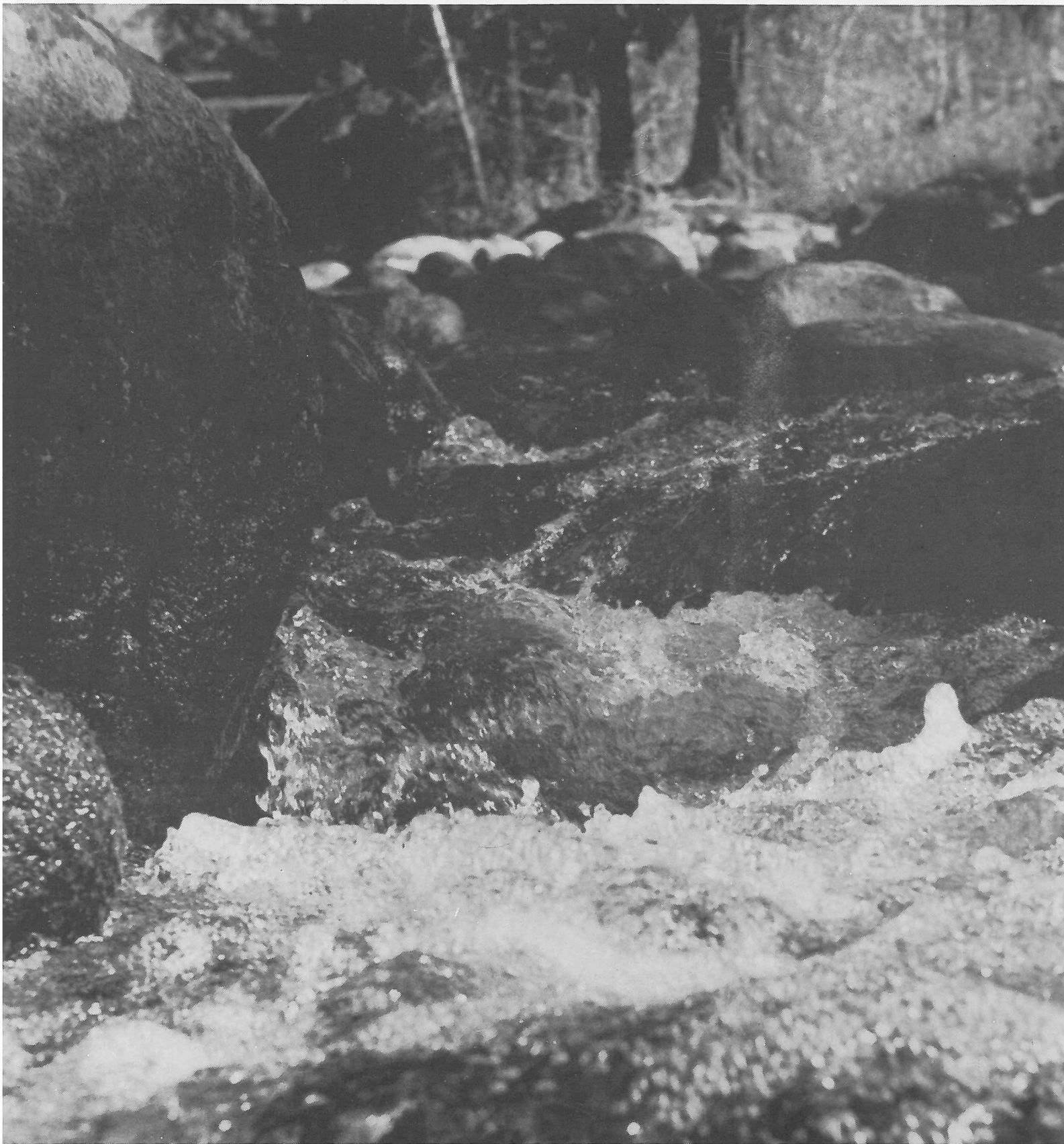
YAMPA RIVER:

named by the Ute Indians from a plant that they used in bread making, and also smoked. (*Carum Grairdneri*). The yampa is a wild onion and grows thick along the stream.

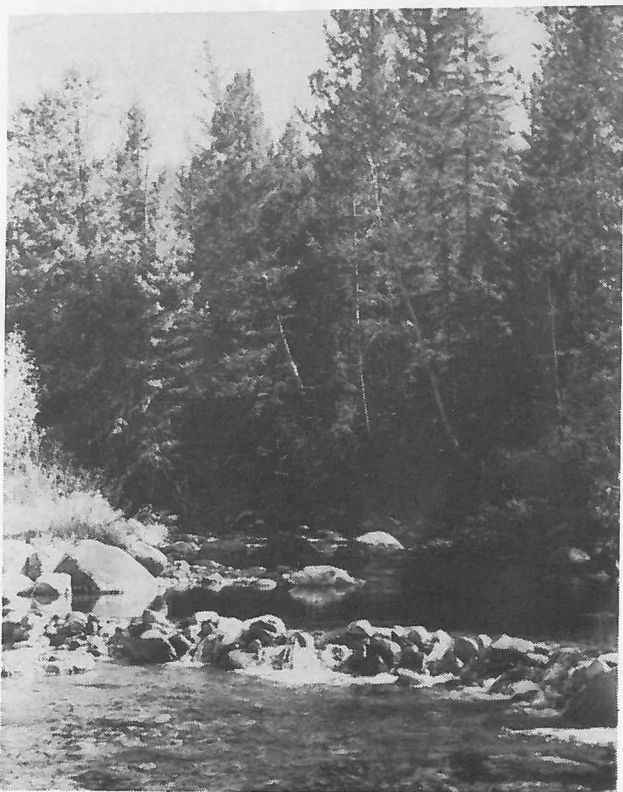
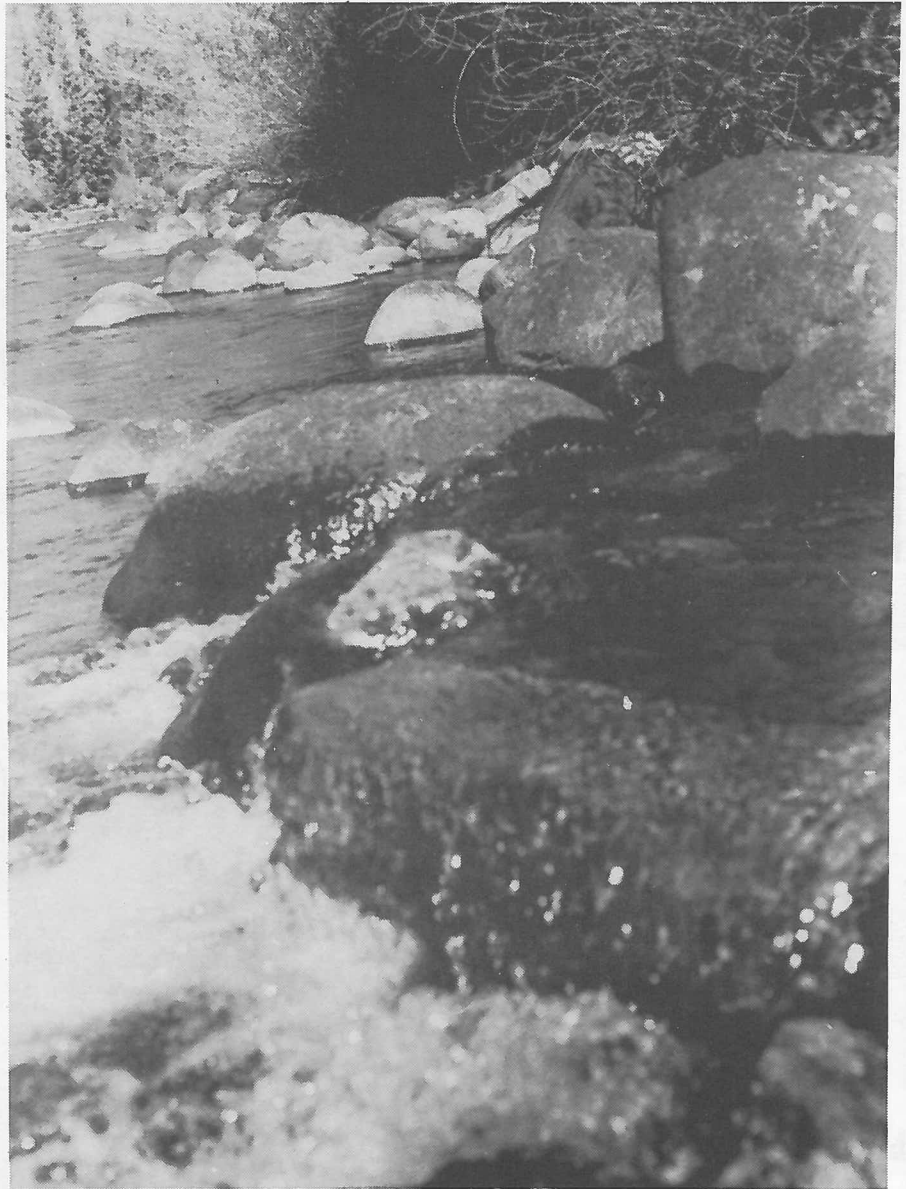
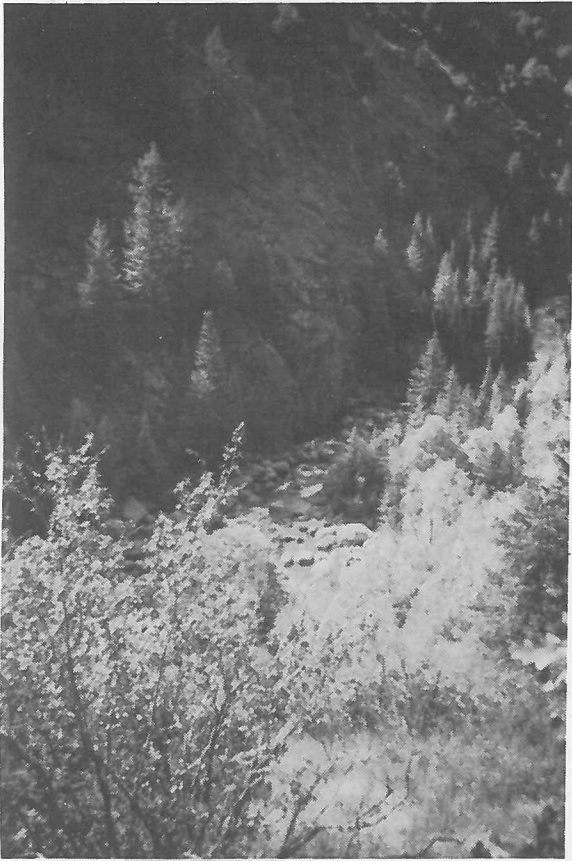


Yampa River is also called
the Bear River.

MAD CREEK: named in 1877 by local people on account of a traveler who nearly



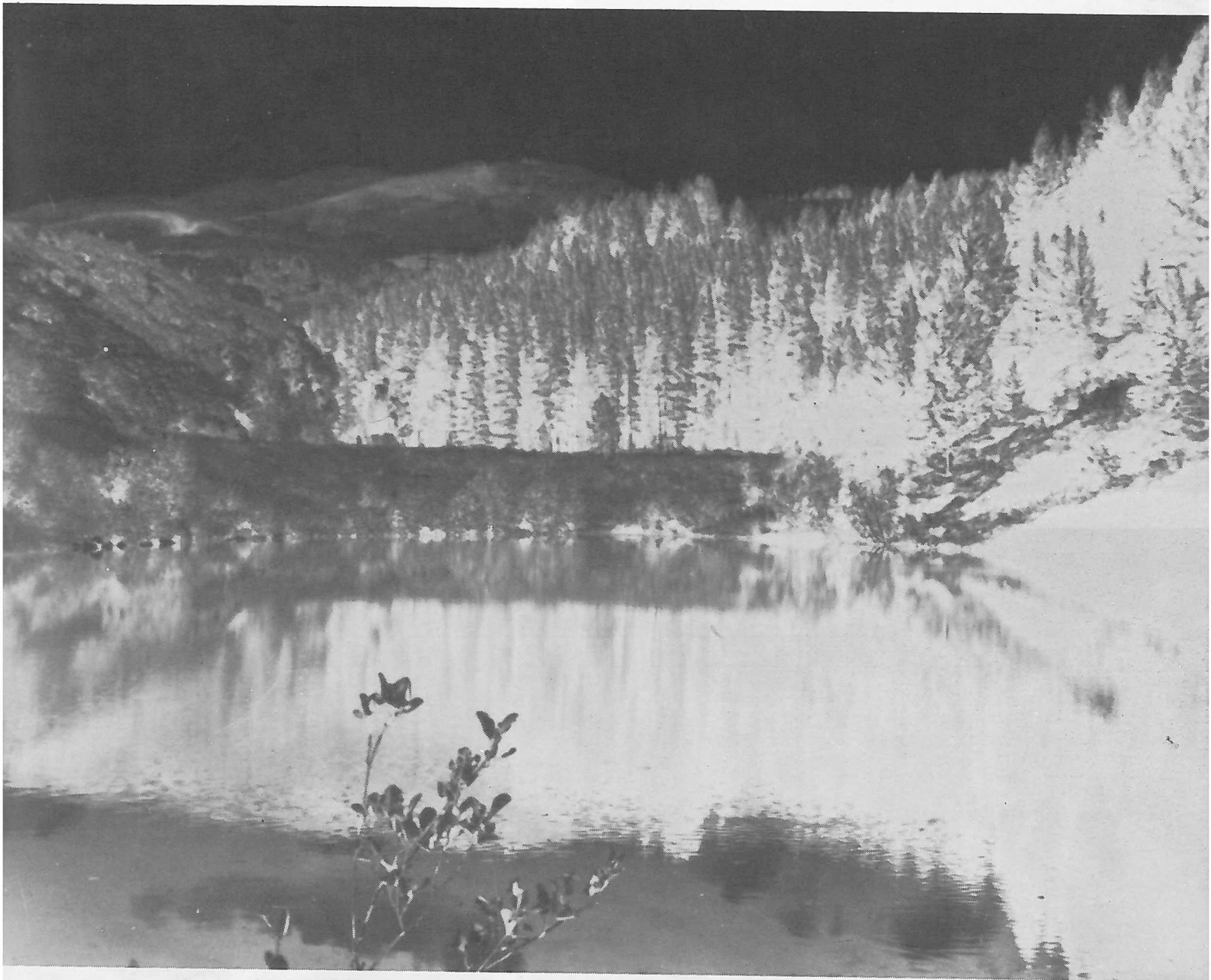
drowned in the stream, and whose horse was beaten to death on the rocks.



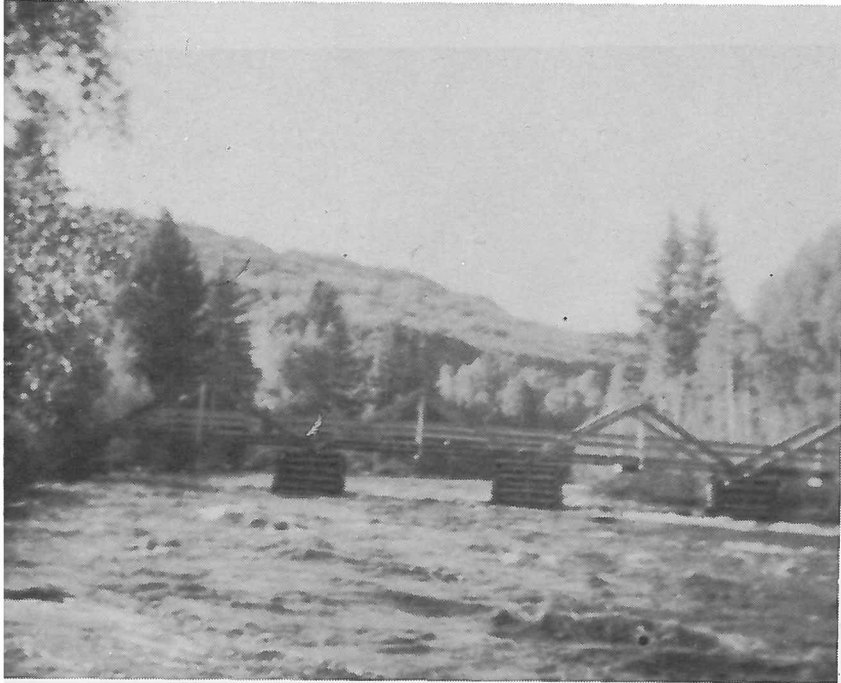
In the fall, the stream seems to be anything but 'mad'.



SPRING CREEK: empties into Bear River near the hot springs at Steamboat Springs.



These reversals were taken with infrared film, and printed with black and white processes.



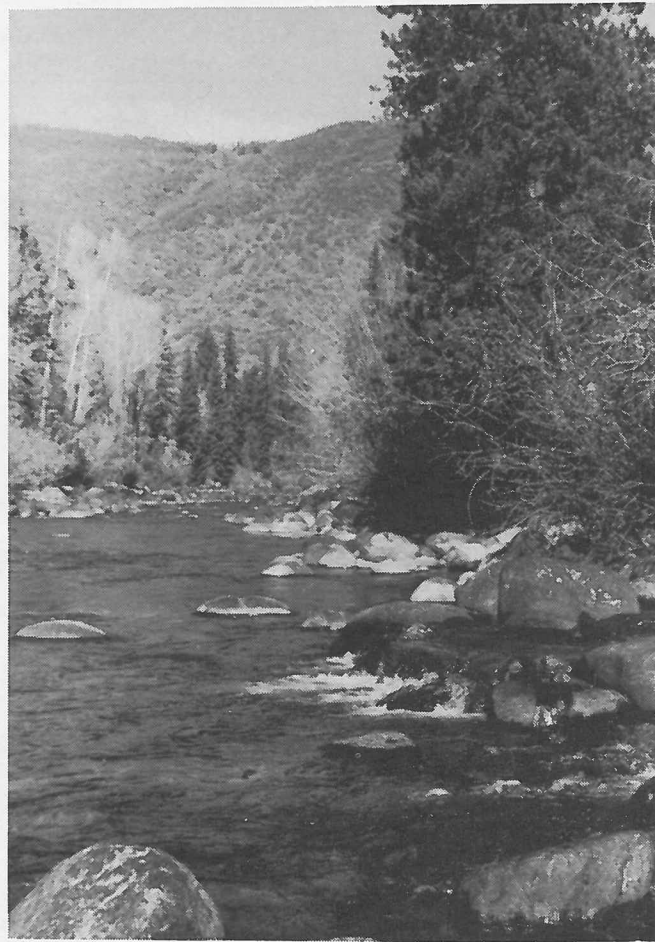
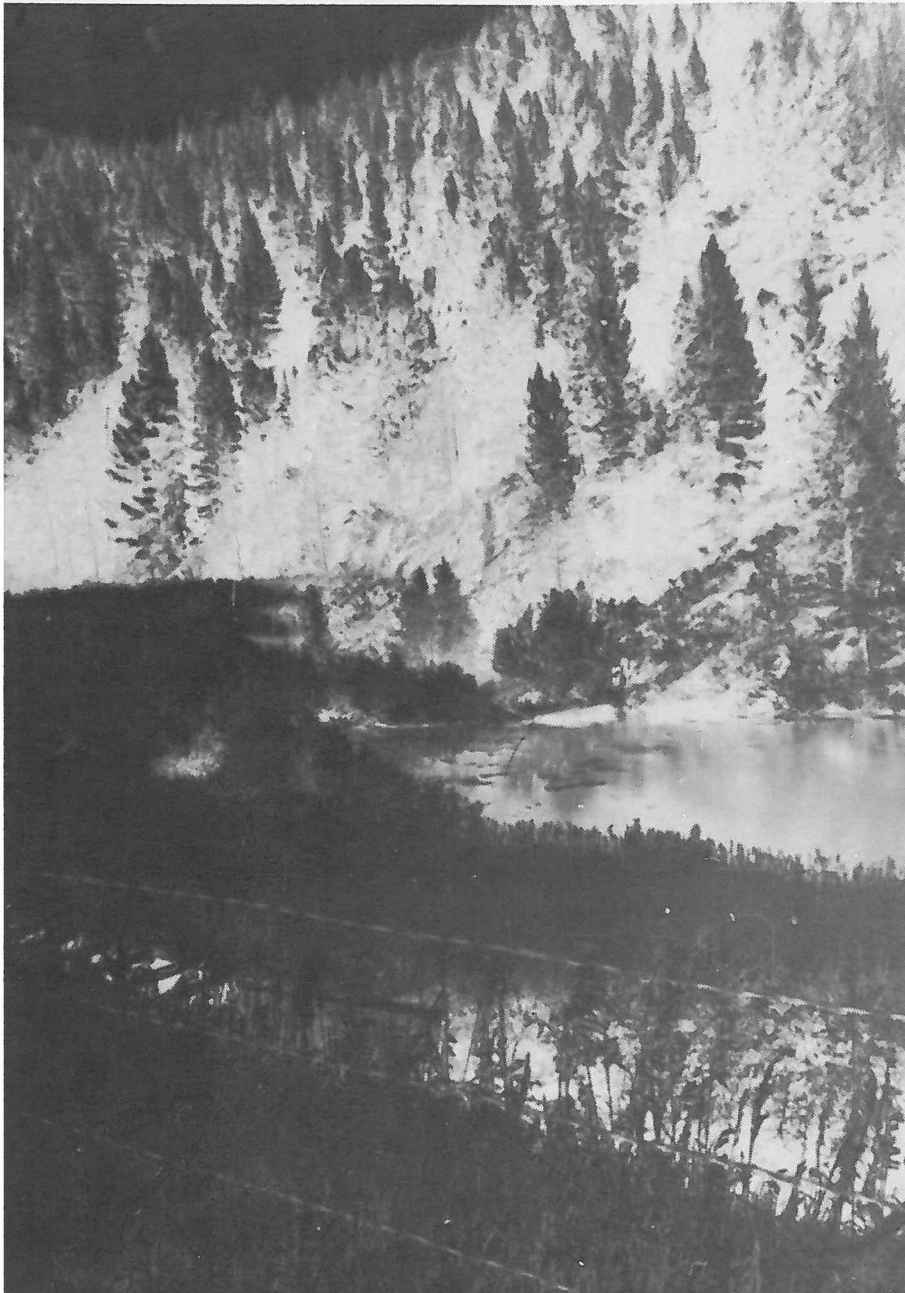
High Water

May Photo



MAR 56

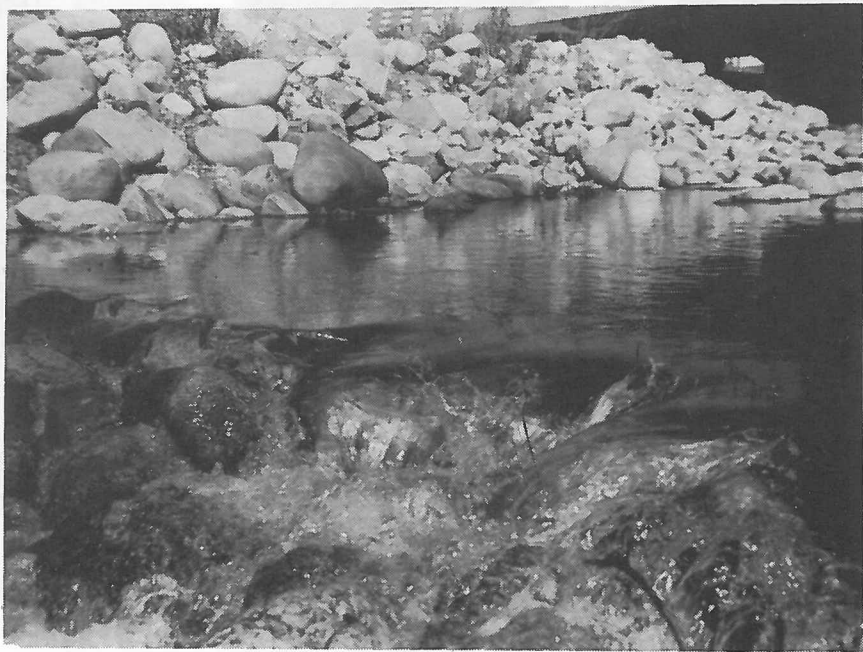
Low Water



Steamboat Reservoir



It's easy to see why we call this Fish Creek.





**Fish Creek Falls in early October.
The snow comes early, and everything freezes easily.**

